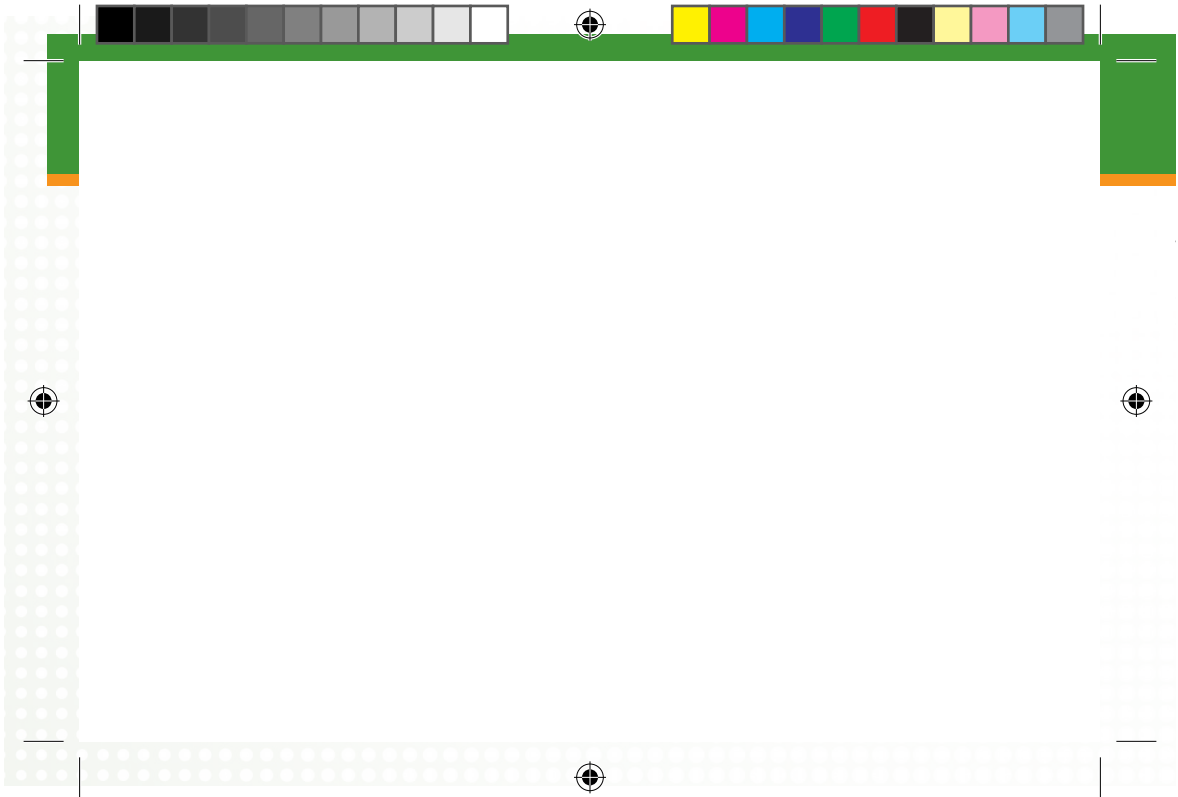




**CARROT**



**QUICK START GUIDE**  
用戶使用手冊





## QUICK START GUIDE 用戶使用手冊

Thank you for your purchase of Carrot Home Starter Kit. This kit contains the Carrot Touch and an IR Repeater. Carrot Touch is a powerful touch screen tablet that can be used for control and setting of up the Carrot Home Automation (HA) System. The IR Repeater extends the control of infrared aware appliances to areas away from your Carrot Touch. By using additional IR Repeaters as needed (purchased separately), you can control IR-aware appliances throughout your home.

感谢您选购家乐屋家居系统。本产品能完美地融入家乐屋智能家居系统，令用户能使用 Carrot Touch 智能平板来遥控家中的红外线家电设备。家乐屋智能系统可同时使用多台红外线信号转发器以达到全屋无缝覆盖。



## CARROT HOME STARTER KIT FEATURES

- Control functions for air conditioning with settings for heat, cool, fan, dry and off modes; temperature and fan speed settings; end user can designate locations and names for the airconditioners
- Control functions for Audio-visual or other appliances that are controllable via infrared (IR) codes, either downloaded from the Carrot Cloud or learned by the users directly using Carrot Touch
- Control functions for lighting ON/OFF, and dimming; end user can designate locations and names for the light circuits (Optional with Carrot Light Switch)
- Control functions for open and close of motor curtain; end user can designate locations and names for the curtain motors (Optional with Carrot Curtain Switch)
- User defined scenario including control functions from lighting, aircon, curtain and other IR controllable appliances. User can define time delays between IR commands
- User can define time schedules to trigger scenarios automatically
- User can perform pairing of Carrot switches, dimmers, and IR-repeaters directly from Carrot Touch
- Digital picture frame function
- Language supported English, Traditional Chinese and Simplified Chinese
- iOS and Android App for lighting, aircon, curtain, scenario and IR appliance control using Carrot Cloud Services
- Download IR codes using Carrot Cloud Services



## 家乐屋入门套装功能

- 空调控制功能，可调节暖风、冷风、送风、除湿及关闭模式，以及温度及风速等，用户更可自订空调位处的房间及名称
- 用从 Carrot Cloud (家乐屋云端) 下载或用户自行 " 学习 " 的红外线代码来控制影音电器的功能
- 电灯开关及光度调节控制功能，用户可自订电灯电路的位置和名称 (此自选项目需另购家乐屋电灯开关)
- 电动窗帘开关控制功能，用户可自订电动窗帘的位置和名称 (此自选项目需另购家乐屋电灯开关)
- 用户自订电子情景，包括电灯、空调、电子窗帘及其他可通过红外线控制的电器，用户可以指定红外线指令之间的时延
- 用户可自订运行时间表，系统将自行启动不同情景
- 用户可以直接从 Carrot Touch 执行家乐屋开关、光暗调节开关和红外线重复器的配对
- 数码相框
- 支持英文、繁体中文和简体中文
- 利用家乐屋云端服务的 iOS 及 Android 流动应用程序，可遥控电灯、空调、窗帘、情景及红外线 (IR) 可控的电器
- 利用家乐屋云端服务下载红外线代码

# CARROT TOUCH™

IR transmitter and receiver  
红外线收发器

Main switch  
主开关

LED indicator for charging  
LED指示灯

Main touch screen  
主触摸屏

Base station connection point  
机座连接点

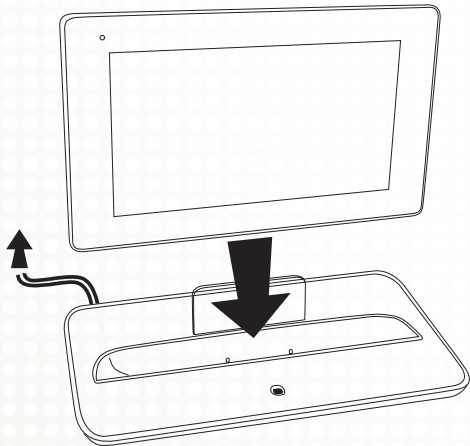
MicroSD memory card slot  
MicroSD 记忆咭插槽



## TECHNICAL INFORMATION 技术规格

Catalogue Number 目录编号	LA3-TBL5D
Operating Frequency 工作频率	433.05 MHz-434.79 MHz
Output RF Power 输出射频功率	<10mW
Resolution 屏幕分辨率	800 x 480 Landscape Mode
Operating Temperature Range 工作温度范围	0°-40°C
Operating Humidity Range 工作湿度范围	0-95% RH non-condensing
Connectivity 连通性	Wireless LAN
Video intercom function 可视对讲功能	Yes
Speaker 扬声器	Yes
Microphone 麦克风	Yes
Color Options 颜色选项	White: LA3-TBL5D-W or Black: LA3-TBL5D-B
Compliance 合规	IEC 60950-1

## CHARGING THE DEVICE 为你的产品充电



Connect your Carrot  
Touch to Base station  
把Carrot Touch连接至机座

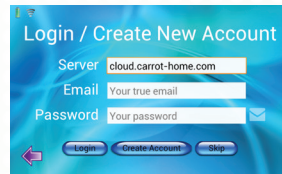
Connect your A/C  
adaptor to Base station  
为机座上电源适配器

6

At least 6 hours for  
the first charge  
首次充电至少6小时



# ACCOUNT REGISTRATION 登记账户



Follow on-screen steps to finish registration

按画面指示完成登记


Language - Select desired language

语言 - 选择操作系统之语言

WiFi - Join your home WiFi network with the wireless network password

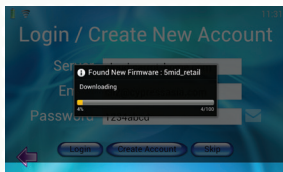
无线网络 - 连接家居无线网络

If you are a first time user, you need to first create a new Carrot Cloud account. Please fill in your email address and type a new password. Then, select "Create Account" to create a new account.

If you already have an existing Carrot Cloud account, or you are setting up additional Carrot Touch to use in the same system, please just fill in the email address you used previously to create the account, and then enter the previous password. This time, please select "Login" to log into the system directly. If, however, you know you had an existing account but forgot its password, please enter the email address you used previously to create the account, then select the  icon to have the password sent to your email address.

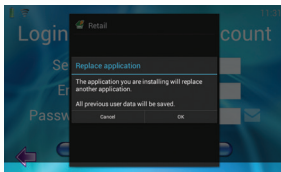
如果你是首次用户，你需要首先开设新的 Carrot 云端帐户，请填写你的电邮地址及输入新密码，然后，选择「建立新帐户」以开设新帐户。如果你已经有一个 Carrot 云端帐户，或你正在同一系统中使用额外的 Carrot Touch，请填写你原有的电邮地址以开设帐户，接着输入原有的密码。这时，请选择「登入」以直接登入系统。但如果你是现有用户，但忘记密码，请输入你开设帐户时使用的电邮地址，然后按下相关图示  以便把密码发送到你的电邮地址。

# ACCOUNT REGISTRATION 登记账户

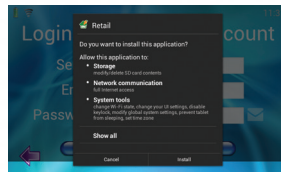


After connecting to the internet, the Carrot Touch will check if there is newer version of firmware, please wait for the download to complete.

连接到互联网后，Carrot Touch 将检查固件是否有更新版本，请等候下载完成。



When you see there is a prompt to replace application select "OK".  
当你看到替换应用程序的提示讯息，请选择「OK」。



And then select "Install" to update the firmware.  
然后选择「Install」以更新固件。

## LOGGING IN 进入首页



### Home Screen

This is the Home Screen where you can find all the icons for various control functions, but you need to first set up the HA system.

#### 主螢幕

这是主螢幕，你可以找到各种遥控功能的图示，但你需要首先设定 HA 系统。



### Settings

Enter Settings page to set up Carrot HA system.

#### 设定

进入系统设定页面。

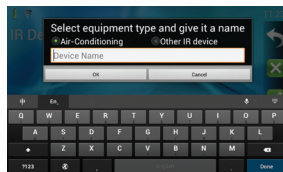
## DOWNLOAD IR CODES FROM SERVER

Carrot Touch has a built-in IR Emitter and Learner, so you can use it as a Universal IR Remote. Before you can use it to replace your multiple remote controllers, you must give it the IR codes used to control your IR-aware appliances. One of the easiest ways is to download the IR codes from the Carrot Cloud.



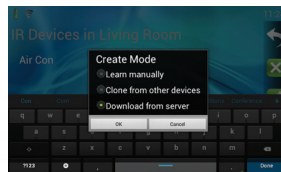
**Step 1**  
Enter this section to set up IR codes for your appliances.

第一步  
进入此部份为你的电器设定IR代码。



**Step 2**  
Select "Air-conditioning" or "Other IR device" and input device name.

第二步  
选择「空调」或「其他红外线设备」，然后输入装置名称。

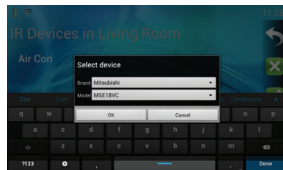


**Step 3**  
Select "Download from server".

第三步  
选择「从服务器下载」。

## 从服务器下载IR代码

Carrot Touch 有一个内置的红外线发射器及学习器，可作为通用的红外线遥控器使用。在你使用它来代替多个遥控器之前，你必需设定IR代码以控制你的红外线电器。最简单的方法之一是从 Carrot Cloud 下载IR代码。



### Step 4

Select the Aircan Brand and model and press OK.  
Make sure you know the correct model of the aircon. It takes a few seconds to download the IR codes.

### 第四步

选择空调品牌及型号，然后按「确定」。请确保您知道空调的型号，下载红外线代码需要几秒钟。



### Step 5

You can then test the Aircan IR code you just downloaded to Carrot Touch. To test, go to Aircan section shown above. Then, point the topside of the Carrot (where IR transmitter is located) towards the Aircan unit and select the desired control functions.

### 第五步

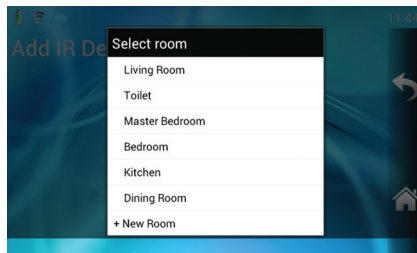
接着，您可测试刚刚下载到 Carrot Touch 的空调红外线代码。如要进行测试，请进入如上图所示的空调部份，然后将 Carrot Touch 的上部(即红外线发射器的位置)指向空调，并选取所需的控制功能。

# LEARNING IR CODES

Carrot Touch has a built-in IR Emitter and Learner, so you can use it as a Universal IR Remote. Before you can use it to replace your multiple remote controllers, you must give it the IR codes used to control your IR-aware appliances. One of the easiest ways is to download the IR codes from the Carrot Cloud.



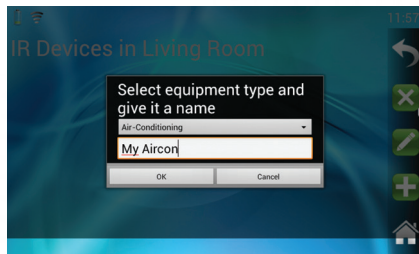
Main Icon for Infrared devices management.  
增加设备  
为新添的设备进行连接。



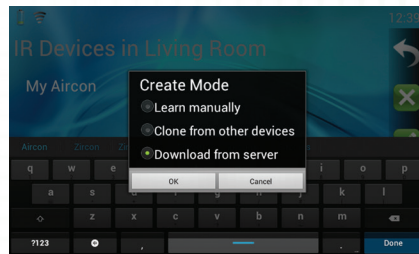
Select Room.  
选择房间。

## 学习IR代码

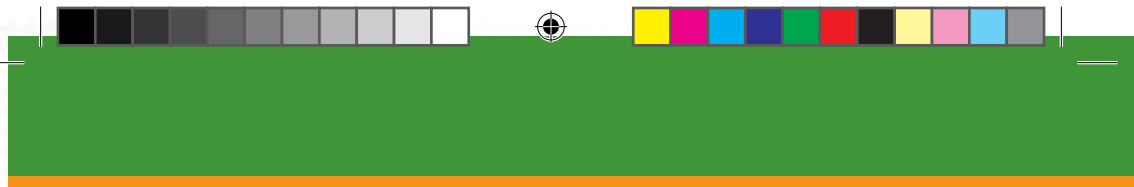
Carrot Touch 有一个内置的红外线发射器及学习器，可作为通用的红外线遥控器使用。在你使用它来代替多个遥控器之前，你必需设定IR代码以控制你的红外线电器。最简单的方法之一是从 Carrot Cloud 下载IR代码。



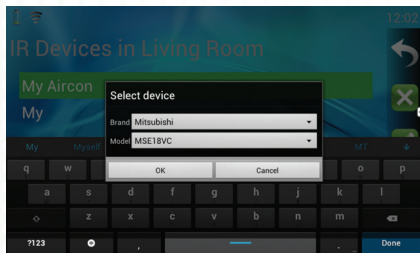
Press "+" on the right hand side and select the device type.  
增加设备  
为新添的设备进行连接。



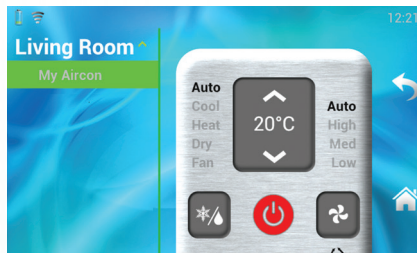
Select "Download from Server".  
选择「从服务器下载」。



Carrot Touch has a built-in IR Emitter and Learner, so you can use it as a Universal IR Remote. Before you can use it to replace your multiple remote controllers, you must give it the IR codes used to control your IR-aware appliances. One of the easiest ways is to download the IR codes from the Carrot Cloud.

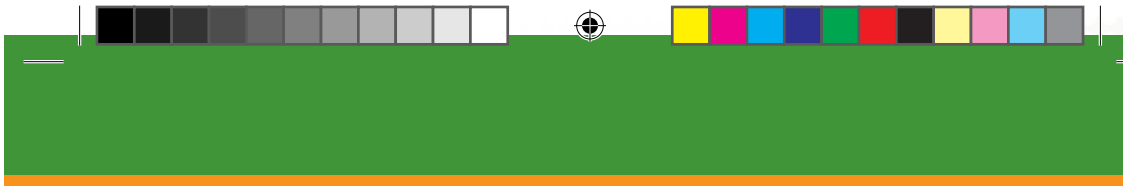


Select the Brand and Model.  
增加设备  
为新添的设备进行连接。



Test it immediately with your device.  
选择房间



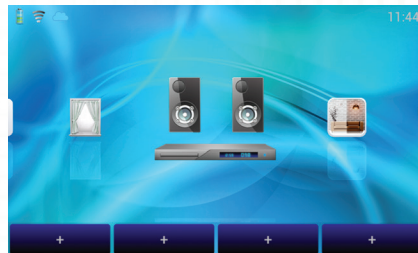


Carrot Touch 有一个内置的红外线发射器及学习器，可作为通用的红外线遥控器使用。在你使用它来代替多个遥控器之前，你必需设定IR代码以控制你的红外线电器。最简单的方法之一是从 Carrot Cloud 下载 IR 代码。



You may add up to 6 self-defined keys at the bottom of the panel.

增加设备  
为新添的设备进行连接。



Main Icon for controlling your infrared devices..

选择房间

# IR-REPEATER

Figure 图 1 (Rear view 产品背部)

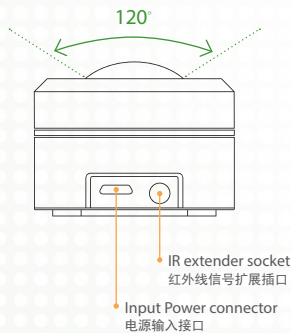
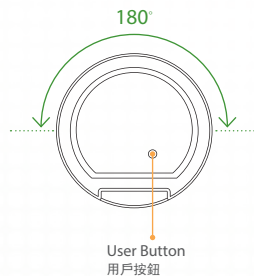


Figure 图 2 (Bottom view 产品底部)



— (IR view angle 红外线发射角)

Device must be powered by official adapter only. It may be damaged by incorrect adapter.  
须使用原装供电适配器·错误使用适配器有机会损坏产品·

## 红外线信号转发器

### TECHNICAL INFORMATION 技术规格

Catalogue Number 目录编号	LA3-RPT1
Operating Frequency 工作频率	433.05 MHz–434.79 MHz
Output RF Power 输出射频功率	<10mW
Infrared Line-of-Sight Coverage 红外线直线覆盖	10 meters
Operating Temperature Range 工作温度范围	0°–40°C
Operating Humidity Range 工作湿度范围	0–95% RH non-condensing
External IR emitter 外接红外线发射线	Yes (optional accessory: Model no. ITX-002)
C-Wave® Network Repeating feature C-Wave® 网络转发功能	Yes
Compliance 合规	IEC 60950-1

## PAIRING UP IR REPEATER

You can use a paired IR Repeater to emit the IR when the appliance under control is in another room. But you must first follow the procedure below to pair the IR repeater to the Carrot Touch and to get the IR codes into the Carrot Touch first (either by direct learning or downloading from the Carrot Cloud). Finally, please follow the later section in "Linking your Appliances" to download the IR codes from Carrot Touch to the IR repeater.



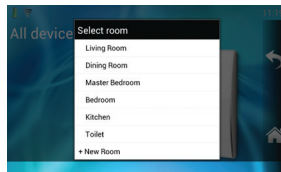
**Step 1**  
Power up the IR repeater. When connected, you can see the LED flashes slowly on top of the device.

第一步  
给红外线信号转发器通电，当连接到电源就可以看到设备顶端的指示灯缓慢闪烁。



**Step 2**  
To pair up IR Repeater, go to Settings and select Add RF Device icon as shown above.

第二步  
要配对红外线信号转发器，转至设置，然后选择添加射频设备图标，如上图所示。



**Step 3**  
Select a room for the IR repeater. If you can't find a name for your location you can add a new room as shown above.

第一步  
为红外线信号转发器选择房间，如果不能找到您需要的位置名称，您可以添加一个新的房间，如上图所示。

## 配对红外线信号转发器

当你需要控制的电器位于另一间房间的时候，你可以使用一个相配的红外线信号转发器 (IR Repeater) 以发射红外线。但是你首先必须遵循以下的步骤，把红外线信号转发器与 Carrot Touch 配对，并把红外线代码输入Carrot Touch 内(可通过直接取得或从家乐屋云端下载)。最后，请按照「连结你的电器」的后半部份，从Carrot Touch 下载红外线代码到该红外线信号转发器。



**Step 4**  
Press and hold the recessed User Button for 3 seconds until LED start flashing rapidly.

第四步  
紧按着用户按钮3秒，直到指示灯开始快速闪动。



**Step 5**  
After the LED flashes rapidly, release the button, and within 60 seconds pair the IR repeater by pressing +. LED stop flashing when you have successfully paired the IR repeater to the Carrot Touch.

第五步  
在LED灯快速闪动之后，请松开按钮，并在60秒内按下 +。当你成功把红外线信号转发器与 Carrot Touch 配对后，LED灯便会停止闪动。

# LINKING YOUR APPLIANCES



## Step 1

Before you link the IR codes with the IR Repeater, the IR codes must be learnt or downloaded into Carrot Touch first. Please follow the procedure on page 10.

### 第一步

当你连结IR代码及红外线信号转发器之前，必须先学习IR代码或下载到Carrot Touch上，请依照第10页的步骤进行。



## Step 2

Then, take the Carrot Touch next to the IR Repeater you just paired, and go to Settings as shown above.

### 第二步

然后，请把 Carrot Touch 放到你刚配对的红外线信号转发器附近，并进入如上图所示的「设置」部分。



## Step 3

Select the Modify RF Device icon as shown above.

### 第三步

请选择如上图显示的修改射频设备图示。

## 连接您的电器



### Step 4


Select the IR Repeater from the list that you want to use to control the appliances.

#### 第四步


从清单内选择你想用来控制电器的红外线信号转发器。



### Step 5

Select the appliance you want to control and then select the  icon as shown above. Then the IR codes will be downloaded to the IR Repeater. The process might take a few minutes.

#### 第五步

选择你想遥控的电器，然后选择  上图所显示的图示。接着，IR代码便会被下载到红外线信号转发器内。此过程可能需要几分钟。



### Step 6

Go to the Audio Visual section to test if the TV can be controlled correctly.

#### 第六步

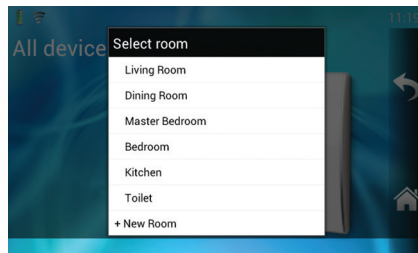
请到影音部份以测试电视机是否能正常地被遥控。

# PAIRING LIGHT SWITCH

You can pair up any number of Carrot Home RF switches using the following procedure:  
你可以通过以下程序·把家乐屋射频开关配对起来：



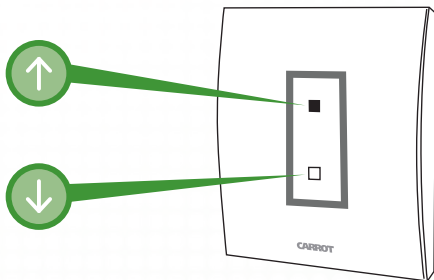
**Add Device**  
Register a new Carrot device with Carrot Touch.  
增加设备  
为新添的设备进行连接。



**Select the Room.**  
选择房间。

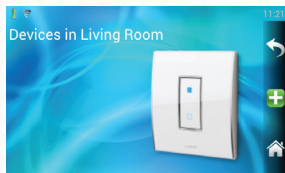


## 配对灯光开关



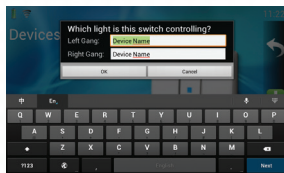
Press buttons on the switch in the following sequence (for the 2 Gang Switch, user must press the left-side button): "Down"-"Down"-"Up"-"Down" (long press the last "Down") until you see LED lights on the switch start flashing, then the switch is ready for pairing. 按照以下的顺序按下灯掣上的按键（如果是双联开关，用户请使用左边的按键进行）：“下”-“下”-“上”-“下”（最后长按“下”）直至LED灯闪烁，这表示该灯掣已经准备连接。

## PAIRING LIGHT SWITCH 配对灯光开关



When the LED lights are flashing, tap .

当LED灯闪亮时，按 .



Input the device name.  
为该装置命名。



Go to the lighting section to test if the light can be controlled correctly.  
请到灯光控制部份测试灯光是否能正常受控。

## USING iOS OR ANDROID 使用 iOS或ANDROID

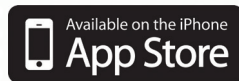
When you place the Carrot Touch on its charging dock and connect it to the Carrot Cloud via your home WiFi, you can also use the Carrot Cloud App to control the system using your smartphones or tablets. The Apps can be downloaded from the Google Play Store or Apple App Store directly.

当你将 Carrot Touch 放到其充电插座上，并通过你的家居无线网络 (WiFi) 将它连接到家乐屋云端时，你也可以利用智能手机或平板电脑的家乐屋云端应用程序 (Carrot Cloud App) 来遥控该系统。这个 App 可直接从 Google Play Store 或 Apple App Store 直接下载。

For how to set up the Carrot Cloud App on your smartphone or tablet, please refer to the Help Section at the link below or directly via the Help icon on the Carrot Touch:

有关如何在你的智能手机或平板电脑安装家乐屋云端应用程序，请参阅以下连结的说明 (Help) 部分，或直接按下 Carrot Touch 的说明图示：

[http://help.carrot-home.com/carrot\\_touch/](http://help.carrot-home.com/carrot_touch/)





## SAFETY 安全

This product operates at a RF frequency band of 433.05MHz to 434.79Mhz. Please contact local sales representatives for specifications, warranty and other information in various countries. The effective radiated power of this product does not exceed 10mW. Before installation, please read the installation procedure carefully and take all safety precautions.

该产品工作在射频频段433.05MHz至434.79MHz的。如需获取在不同国家的产品规格、保修和其他信息请联系当地的销售代表。本产品的有效辐射功率不超过10毫瓦。安装前，请仔细阅读安装程序和采取所有安全措施。



## WARRANTY 保固

Carrot Home reserves the right to make changes to any product to improve reliability, function or design. Carrot Home does not assume any product liability arising out of, or in connection with, the application or use of any product, circuit, or application described herein. No license is granted, either expressly or by implication, estoppel, or otherwise under any patent right or patent, covering or relating to any combination, system, apparatus, machine, material, method, or process in which Carrot Home products might be used. An implied license exists only for equipment, circuits and subsystems contained in Carrot Home products.

Carrot Home 保留变更所有产品以提升其可靠性、功能和设计的权利。针对所有导因于或与其相关之使用或使用本文中所提及的任何产品、电路或应用程式的任何产品责任，Carrot Home 概不负责。在任何可能使用 Carrot Home 产品之状况、包括结合、系统、装置、机器、材料、方法、程序或与之相关的状况下，Carrot Home 并未以明示、默示、禁反言或其他方式授予专利权或专利。只有 Carrot Home 产品内含之设备、线路和子系统包含隐含授权。

### Warranty

For the complete Carrot Home hardware product warranty statement, go to:

[http://warranty.carrot-home.com/carrot\\_touch](http://warranty.carrot-home.com/carrot_touch)

保固

如欲查询完整的 Carrot Home 硬件产品保固声明，请造访网站：

[http://warranty.carrot-home.com/carrot\\_touch](http://warranty.carrot-home.com/carrot_touch)



## SUPPORT 技术支持

### User Manuals

For more information about the Carrot Touch™ refer to the Help Section at the link below or FAQ on the device. For the latest version of Help Section and all Carrot Touch guides, please go to: [http://help.carrot-home.com/carrot\\_touch](http://help.carrot-home.com/carrot_touch)

#### 使用者手冊

如需有关 Carrot Touch 的详细资讯，请参阅以下的服务网址或于 Carrot Touch 里的常见问题。若需要所有 Carrot Touch 指南的最新版本，请造访：  
[http://help.carrot-home.com/carrot\\_touch](http://help.carrot-home.com/carrot_touch)

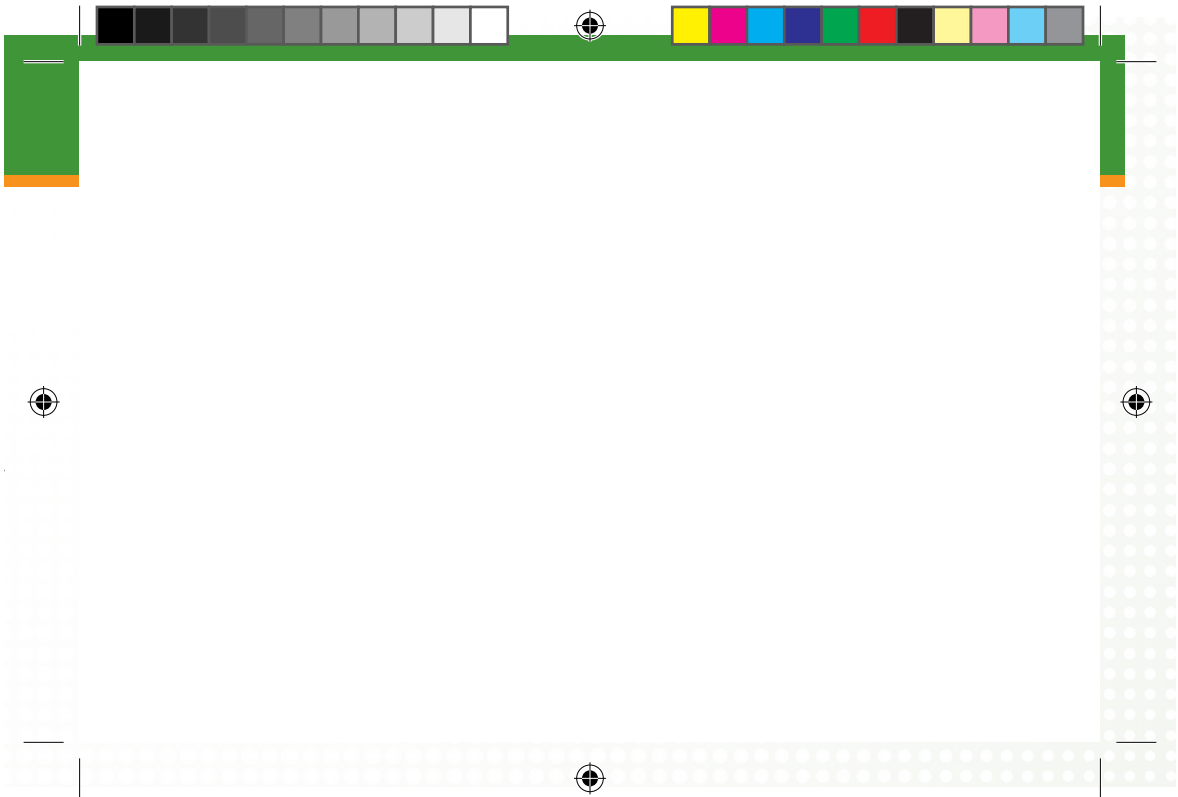
### Software Support

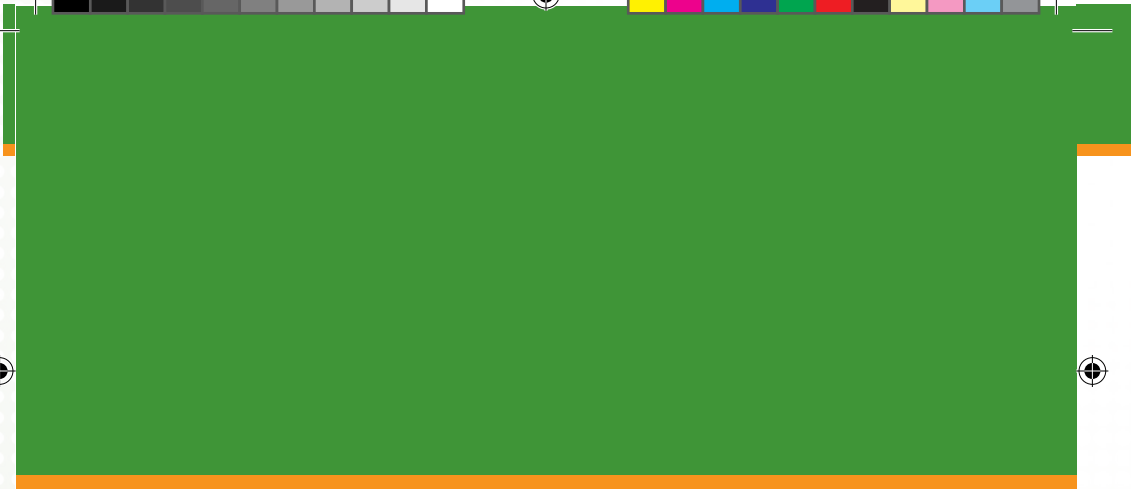
Carrot Home wants to ensure that customers have the latest release of entitled software at the time of product purchase. To confirm that your Carrot Home device shipped with the latest release of entitled software, visit:

<http://www.carrot-home.com>

#### 软件支援

Carrot Home 希望确认客户在购买产品时即拥有最新授权软体。若要确认您的 Carrot Home 装置在购买时已配备可用的最新授权软体，请造访：  
<http://www.carrot-home.com>





CH-RGB-QSG-08122014

